

Ohio 2022 Energy Sector Industry Contribution Analysis

Electric Power Generation Solar

Report prepared November 2022 by Eric Romich, Associate Professor, OSU Extension Community Development

Technical Report #
OER-SPG-122022

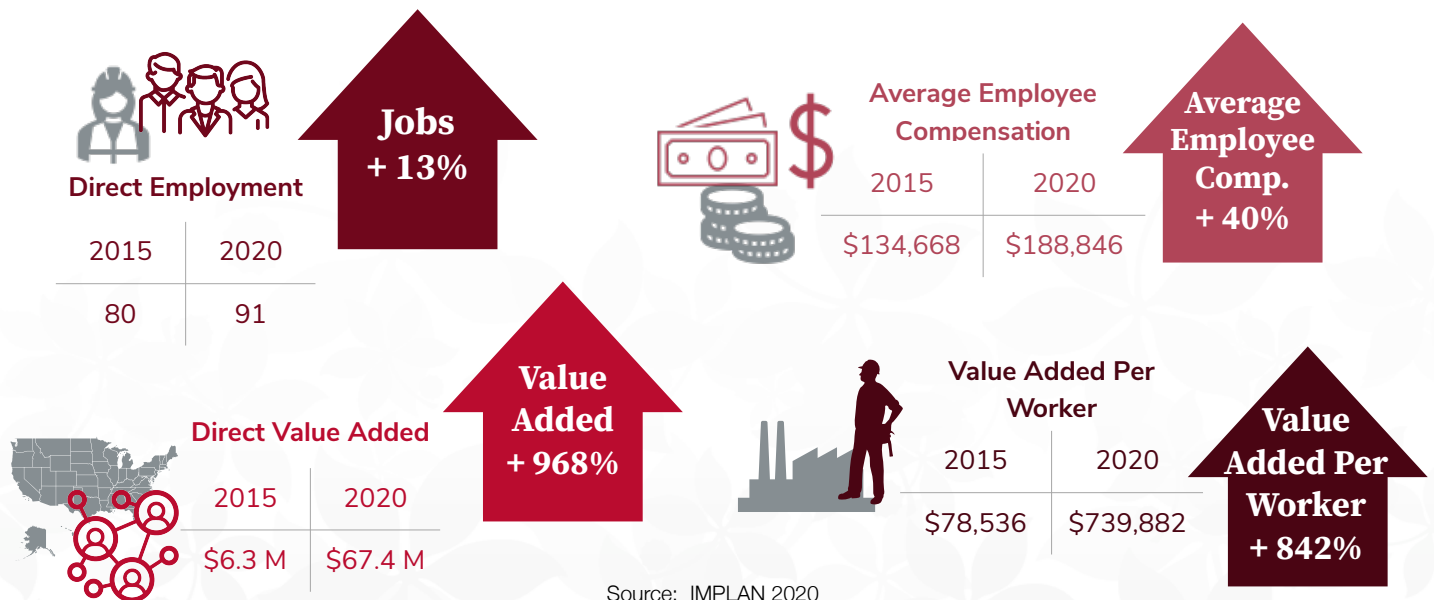
Total employment impact for the solar electric generation industry in 2020 was 337 total jobs which consisted of 91 jobs directly associated with the solar electric generation industry, 108 indirect jobs as a result of business to business transactions, and 138 induced jobs supported by household spending. The solar electric generation industry contributed a total of \$91.8 million in value added, including \$67.4 million in direct value added, \$11.8 million in indirect value added, and \$12.5 million of induced value added. In summary, in 2020 the solar electric generation industry accounted for 0.3% of the Ohio energy sectors total employment and 0.5% of the total value added. This technical bulletin summarizes the “direct” contribution trends of the

Table 1: Solar Electric Generation Impact Summary (2020)

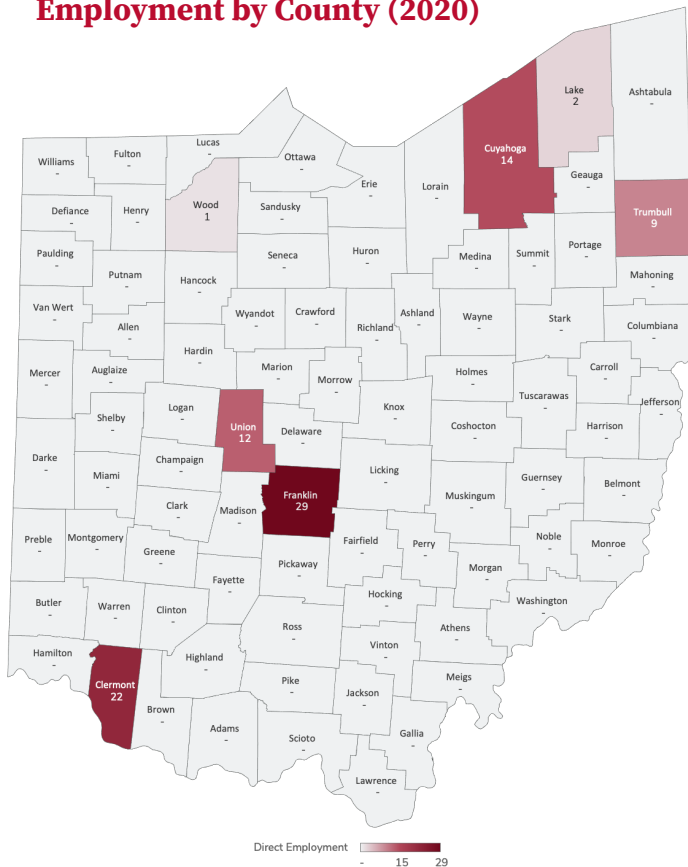
Impact	Jobs	Value Added
Direct	91	\$67.4 M
Indirect	108	\$11.8 M
Induced	138	\$12.5 M
Total	337	\$91.8 M

solar electric generation industry to the Ohio economy, direct employment by county, and to industries impacted by employment. For additional information, please refer to the 2022 Ohio Energy Industry Contribution Analysis bulletin #OER-122022.

Ohio 5-Year Trends of Direct Contribution



Ohio Solar Electric Generation Direct Employment by County (2020)



OSU IMPLAN Editor Peer Review Team

Nancy Bowen-Ellzey, Associate Professor
Field Specialist
Email: bowen-ellzey.1@osu.edu

Joe Lucente, Associate Professor
OSU Extension, CD, and Ohio Sea Grant College Program
Email: lucente.6@osu.edu

Amanda Osborne
Educator, CD, OSU Extension – Cuyahoga County
Email: osborne.414@osu.edu

Modeling Software

IMPLAN® model, 2020 Data, using inputs provided by the user and IMPLAN Group LLC, IMPLAN System (data and software), 16905 Northcross Dr., Suite 120, Huntersville, NC 28078. www.IMPAN.com

OSU Extension Community Development Mission:

We help communities enhance their well-being and create social, economic and environmental conditions in which they can thrive.

Table 2: Solar Electric Generation Employment Impact Top 10 Industries (2020)

Industry	Direct	Indirect	Induced	Total
Electric power generation - Solar	91	0	0	91
Employment services	0	26	3	30
Full-service restaurants	0	5	6	10
Hospitals	0	0	10	10
Other real estate	0	5	4	9
Limited-service restaurants	0	1	6	7
Scenic and sightseeing transportation and support activities for transportation	0	6	0	6
Truck transportation	0	4	1	6
Offices of physicians	0	0	5	5
Other local government enterprises	0	4	1	5

Source: IMPLAN 2020

