



Workshop Design and Materials

1. Process used: Presentation, driving tour, and discussion.
2. Length of workshop: 2 hours
3. Materials provided:
 - Renewable energy presentation using Power Point slides
 - Fact Sheet - Blue Creek Wind Farm
 - Fact Sheet - Rules for Siting a Utility Scale Wind Farm in Ohio
 - Fact Sheet - Wind Energy Development as an Economic Development Strategy for Rural Areas
4. Workshop & Tour Fee: \$250.00

Additional OSU Extension Renewable Energy Programs

1. Energy 101 - Introduction
2. Energy Policy
3. Solar Energy
4. Wind Energy
5. Bio Energy
6. Sustainable community energy planning

Eric Romich
romich.2@osu.edu

Nancy Bowen
bowen-ellzey.1@osu.edu

Myra Moss
moss.63@osu.edu



Mission - Ohio State University Extension Community Development helps communities enhance their well-being.

Vision - Ohio State University Extension Community Development is a leader in community development education an unbiased partner in the implementation of strategies to achieve community goals.

OSU Extensions four areas of focus include:

1. Economic Development
2. Leadership Development
3. Organizational Capacity Building
4. Community Planning

Ohio State University Extension embraces human diversity and is committed to ensuring that all research and related educational programs are available to clientele on a nondiscriminatory basis without regard to age, ancestry, color, disability, gender identity or expression, genetic information, HIV/AIDS status, military status, national origin, race, religion, sex, sexual orientation, or veteran status. This statement is in accordance with United States Civil Rights Laws and the USDA.

Keith L. Smith, Associate Vice President for Agricultural Administration; Associate Dean, College of Food, Agricultural, and Environmental Sciences; Director, Ohio State University Extension; and Gist Chair in Extension Education and Leadership.

For Deaf and Hard of Hearing, please contact Ohio State University Extension using your preferred communication (e-mail, relay services, or video relay services). Phone 1-800-750-0750 between 8 a.m. and 5 p.m. EST Monday through Friday. Inform the operator to dial 614-292-6181.

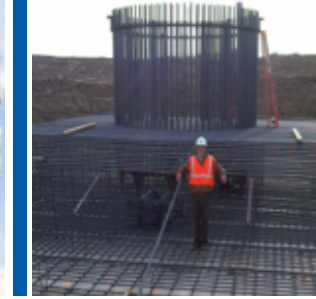
WIND ENERGY DEVELOPMENT IN OHIO

TOUR OF THE BLUE CREEK WIND FARM



EMPOWERMENT THROUGH EDUCATION

www.energizeohio.osu.edu



Background

Wind energy development in Ohio surged ahead with passage of Senate Bill 232 in June, 2010. This legislation established a fair method of taxing generation scale wind projects to make Ohio competitive with other midwest states. A Ohio State University Extension Fact Sheet "SB 232 – Leveling the Playing Field" discusses the role this legislation has played in the development of large scale renewable energy projects. Iberdrola's Blue Creek Wind Farm was one of the first projects in Ohio to comply with the new legislation which balances tax advantages and fair regulation to benefit both the company and community.



Focus of Workshop

While general information on renewables energy drivers will be shared, the main focus of this workshop will provide participants information on wind energy development in three phases including:

1. Overview of Blue Creek Wind Farm

Located just north of US Rt 30 in Van Wert and Paulding Counties, program participants will meet OSU Extension Educators at the local rest stop overlooking two wind turbines. This location provides a opportunity to get a close look at an operating wind turbine. During this time the workshop will start off with a detailed overview of the Blue Creek Wind Farm. This session will include details on the project location, project capacity, technology used, local economic impacts, and energy and environmental impacts.

2. Driving Tour

Leaving from the rest stop, participants will be guided through a driving tour of the wind farm lasting approximately 20 minutes. The tour will offer numerous perspectives of the wind turbines, transmission lines, and substations.



Focus of Workshop (cont.)

3. Workshop on Wind Energy Development

The driving tour will convene at the North Union United Methodist Church meeting room located at 4486 U.S. 127, Van Wert, OH. During this session, OSU Extension Educators will lead participants through an program on wind energy development that will help them to understand the benefits and challenges of wind energy development and beginning steps in preparing and assessing their communities suitability for wind energy.

Empowerment Through Education

