

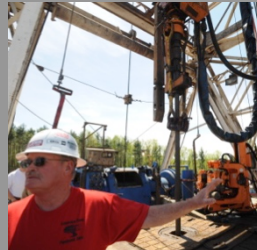
## Partnership Between Extension and Community

Extension Educators in Ohio are prepared to help your community plan for shale development. Our approach is to partner with interested communities by:

1. Providing information, education and resources about shale development impacts based on unbiased and current research, and
2. Provide guidance and facilitation for the creation of a community plan to address the anticipated impacts of shale development.

In turn, the community will:

1. Create a Steering Group and identify volunteers to seek public input,
2. Participate in educational sessions,
3. Form workgroups to develop sections of the plan,
4. Develop the community's plan, including an implementation schedule,
5. Share plan with community



Contact:

Myra Moss: [moss.63@osu.edu](mailto:moss.63@osu.edu)  
Eric Romich: [romich.2@osu.edu](mailto:romich.2@osu.edu)  
Nancy Bowen: [howenhowen-ellzey.1@osu.edu](mailto:howenhowen-ellzey.1@osu.edu)  
Cindy Bond: [bond.227@osu.edu](mailto:bond.227@osu.edu)

# Preparing Communities for Shale Development



# Introduction

Growing domestic oil & gas development is reshaping the rural landscape of the United States. Increasing production in shale formations made feasible by horizontal drilling is positioning the US to overtake Saudi Arabia as the world's biggest oil producer by 2020 (EIA 2014).

Many rural communities are caught unprepared for the social, environmental and economic changes resulting from natural resource based economies.

Extraction of non-renewable resources follows a “boom-bust” cycle; with economic contraction following growth. Local and regional leaders seek to deepen their understanding of shale and other natural resources, and build planning capacity to help their communities withstand boom-bust cycles, building long-term community sustainability.

## PURPOSE OF PROGRAM

The purpose of this program is twofold:



1. To provide community leaders and residents with balanced, research-based information regarding short and long-term social, economic and environmental impacts of shale and other natural resource based development, and
2. To help local communities and regions develop the capacity to use sustainable planning techniques to prepare for long-term economic vitality, social equity and environmental health.

### Program Overview:

This program includes planning techniques and educational materials that can be used by local leaders to prepare for and address the immediate impacts of shale development while taking advantage of revenue generation to build long-term community sustainability. Components include:

- Shale Development 101: Overview of shale oil and gas development. What is hydraulic fracturing? What are common economic, social and environmental impacts? How do you prepare your community by developing a sustainable plan?
- Economic Sustainability: Impacts from sudden income and wealth management, business creation/entrepreneurship, workforce development, economic diversity, other..
- Social Sustainability: Impacts from population growth and diversity on schools, housing, health care, emergency and social services, other.
- Environmental Sustainability: Impacts on natural and built environment including roads, agricultural land, natural areas, water, air, other.
- Developing a Plan: Structure, process, community engagement, tools to undertake a sustainable plan.

